

ERGOHUMAN

LUXURY | ELITE | CLASSIC | PROJECT



COMFORT
WORKSPACE



ERGOHUMAN CONTENTS

ADVANCED ENGINEERING 5

FOCUS ON:

ERGOHUMAN LUXURY 7

ERGOHUMAN ELITE 9

ERGOHUMAN CLASSIC 11

ERGOHUMAN PROJECT 13

FUNCTIONS & FEATURES:

LUXURY & ELITE 14

CLASSIC & PROJECT 16

MODELS & OPTIONS 18

UPHOLSTERY 20

TECHSPEC 24

DIMENSIONS 25

4



LUXURY



CLASSIC



PROJECT

ERGOHUMAN ADVANCED ENGINEERING

Designed and manufactured in-house by Comfort, we control 100% of the design and manufacturing processes from concept to creation.

The Ergohuman range is a perfect fusion of art and science, featuring flex zones that ensure constant support of back and lumbar, adjustable armrests for unparalleled support and a height-adjustable, pivoting headrest for full cranial support.

Ergohuman is ideal for those who are in an office chair for long periods of time and require intensive use seating. With advanced aesthetics, form and function, this ergonomic chair utilises a twin-pivot or synchro-tilt mechanism delivering ultimate adjustability for all users. The Ergohuman can be used as 24h/7day seating and is certified to EU standard EN 5459.



ELITE





ERGOHUMAN LUXURY



OVERVIEW:

The Ergohuman Plus Luxury model takes our top selling chair to new levels, with enhanced aluminium detailing, an independent forward seat tilt function and a deluxe five-star base. Ergohuman Plus Luxury is the ideal high-end executive office chair.

The ingeniously simple single lever control operates the three most frequently used chair functions from a single point of contact (seat height, seat depth and back tilt). Arms are cleverly integrated into the rear of the mechanism to allow closer-to-desk working.

The Ergohuman Luxury also boasts 98% recyclability, has Greenguard Gold Certification and meets EN 5459, EN 1335-2:2009 and EN 1335-3:2009.

Available in a choice of mesh, fabric or leather with polished aluminium frame and base.

FEATURES:

ALUMINIUM DETAILING

SINGLE LEVER CONTROL

TWIN PIVOT CONTROL MECHANISM

DUAL SPRING TECHNOLOGY

INDEPENDENT 5° FORWARD SEAT TILT

SEAT SLIDE

ENHANCED WATERFALL FRONT SEAT

SEAT PRESSURE REDUCTION INSETS

AUTOMATIC LUMBAR SUPPORT

LOCKING HEIGHT, ANGLE, WIDTH & DEPTH ARMREST ADJUSTMENTS

OPTIONAL HEADREST WITH HEIGHT AND ANGLE ADJUSTMENT

ALL PARTS OF THE CHAIR ARE REPLACEABLE AND KEPT IN STOCK FOR LONGER LIFE-CYCLE

Build your own unique Ergohuman Luxury chair using a combination of mesh, fabric and leather finishes at [comfort.global/create](https://www.comfort.global/create)





ERGOHUMAN ELITE



OVERVIEW:

The Ergohuman Plus Elite boasts all the main features of the Luxury model but with reduced aluminium detailing and without the seat forward tilt to target a wider market.

The ingeniously simple single lever control operates the three most frequently used chair functions from a single point of contact (seat height, seat depth and back tilt). Arms are cleverly integrated into the rear of the mechanism to allow closer-to-desk working.

The Ergohuman Elite also boasts 98% recyclability, has Greenguard Gold Certification and meets EN 5459, EN 1335-2:2009 and EN 1335-3:2009.

Available in a choice of mesh, fabric or leather with polished aluminium frame and a choice of bases.

FEATURES:

SINGLE LEVER CONTROL

TWIN PIVOT CONTROL MECHANISM

DUAL SPRING TECHNOLOGY

SEAT SLIDE

ENHANCED WATERFALL FRONT SEAT

SEAT PRESSURE REDUCTION INSETS

AUTOMATIC LUMBAR SUPPORT

LOCKING HEIGHT, ANGLE, WIDTH & DEPTH ARMREST ADJUSTMENTS

OPTIONAL HEADREST WITH HEIGHT AND ANGLE ADJUSTMENT

OPTIONAL COAT-HANGER

ALL PARTS OF THE CHAIR ARE REPLACEABLE AND KEPT IN STOCK FOR LONGER LIFE-CYCLE

Build your own unique Ergohuman Elite chair using a combination of mesh, fabric and leather finishes at comfort.global/create





ERGOHUMAN CLASSIC



OVERVIEW:

Our most popular European model – the Ergohuman Classic – features more slimline aluminium detailing to enhance its value in the marketplace.

The ingeniously simple single lever control operates the three most frequently used chair functions from a single point of contact (seat height, seat depth and back tilt).

The Ergohuman also boasts 97% recyclability, has Greenguard Gold Certification and meets EN 5459, EN 1335-2:2009 and EN1335-3:2009.

Available in a choice of mesh, fabric or leather with polished aluminium frame and base.

FEATURES:

SINGLE LEVER ADJUSTMENT

TENSION CONTROL

TILT LOCK

AUTOMATIC LUMBAR SUPPORT

SYNCHRO-TILT MECHANISM

SEAT HEIGHT ADJUSTMENT

WATERFALL SEAT

BACK HEIGHT ADJUSTMENT

SEAT DEPTH ADJUSTMENT

ARM HEIGHT, DEPTH & SWIVEL ADJUSTMENT

OPTIONAL HEADREST WITH HEIGHT AND ANGLE ADJUSTMENT

OPTIONAL COAT-HANGER

ALL PARTS OF THE CHAIR ARE REPLACEABLE AND KEPT IN STOCK FOR LONGER LIFE-CYCLE

Build your own unique Ergohuman Classic chair using a combination of mesh, fabric and leather finishes at comfort.global/create





ERGOHUMANPROJECT



OVERVIEW:

With the one of main features of Ergohuman series-Automatic Flexible Separate Lumbar Support and more simple mechanism structure, Ergohuman Project is very attractive and popular in the market since it launched. Ergohuman Project delivers superb ergonomic value and always provide full support to user's lumbar area in any sitting positions. With suitable for all users and competitive price, Ergohuman Project is the perfect solution for large organisations and governments.

The single lever provides full control of the chair's features in three simple movements. This allows fast set-up with auto-adjustment to adapt to the weight of any user. The weight-balance mechanism auto-calibrates the recline resistance to suit each user when in dynamic mode.

With this intuitive single level control, automatic weight balance mechanism, automatic flexible lumbar support and breathable mesh, the Ergohuman Project delivers a superb comfortable and healthy ergonomic chair.

FEATURES:

FULLY AUTOMATIC WEIGHT BALANCE MECHANISM

AUTOMATIC TENSION AS PER USERS' BODY WEIGHT

SINGLE LEVER TECHNOLOGY ACTIVATING HEIGHT, SEAT DEPTH & BACK LOCK ADJUSTMENT

AUTOMATIC FLEXIBLE LUMBAR SUPPORT

SEAT HEIGHT ADJUSTMENT

SEAT SLIDE

ENHANCED WATERFALL FRONT SEAT

ARM HEIGHT, DEPTH & SWIVEL ADJUSTMENT- REMOVABLE WITHOUT AFFECTING CHAIR STYLING

OPTIONAL 2D HEADREST WITH ANGLE & HEIGHT ADJUSTMENT

OPTIONAL COAT-HANGER

ALL PARTS OF THE CHAIR ARE REPLACEABLE AND KEPT IN STOCK FOR LONGER LIFE-CYCLE

Build your own unique Ergohuman Project chair using a combination of mesh, fabric and leather finishes at comfort.global/create

14 ERGOHUMAN LUXURY & ELITE SEATING INNOVATION FEATURES

For a full technical specification, please see page 24-26.

OPTIONAL HEADREST

The headrest can be tilted and height-adjusted to suit the user's individual requirements.

BACK HEIGHT

Raise or lower the chair's back to support the user's back and lumbar region.

LUMBAR SUPPORT



The Ergohuman boasts a patented lumbar system which, unlike traditional chairs, delivers comprehensive lumbar coverage and unrivalled support in every recline position. This promotes a more natural pelvic alignment and helps reduce musculoskeletal complications.

A pre-tensioned metal connector provides automatic resistance to the user's lower back which varies with seating positions.

SEAT HEIGHT

Raise or lower the chair's seat height to fit the individual user's anthropometric measurements.

SINGLE LEVER CONTROL MECHANISM (Luxury & Elite)



Ingeniously simple single lever control to operate the seat height, seat depth, seat tilt* and back tilt functions.

TENSION CONTROL (Luxury & Elite)

Adjusts back tension to allow the back to tilt comfortably supporting the user's body weight when reclining.

TWIN-PIVOT MECHANISM (Luxury & Elite)

This patented dual pivot technology offers more movement and constant support with minimal pressure on the underside of the thighs (first pivot point behind the user's knees and the second point under the ischial tuberosities). This encourages continuous supported body movement, therefore increasing blood circulation and reducing fatigue. An additional lock allows the user to recline in a range of positions.

Dual spring engineering helps the user to find the perfect resistance for their weight, and delivers a smooth and comfortable recline action.

POLISHED BASE

A choice of two polished aluminium five-star bases with 60 or 65 mm nylon castors.

BACK HEIGHT

Raise or lower the chair's back to support the user's back and lumbar region.

LUMBAR SUPPORT

The Ergohuman boasts a patented lumbar system which, unlike traditional chairs, delivers comprehensive lumbar coverage and unrivalled support in every recline position. This promotes a more natural pelvic alignment and helps reduce musculoskeletal complications. A pre-tensioned metal connector provides automatic resistance to the user's

SINGLE LEVER MECHANISM

Ingeniously simple single lever control to operate the seat height, seat depth, seat tilt* and back tilt functions.



ELITE



LUXURY

ARMRESTS

Height (8 positions lock), width, angle and depth adjustable to allow forearms to rest comfortably whilst taking the weight off your shoulders.

SEAT SLIDE & TILT*

(*Tilt on Luxury only)

This feature allows depth adjustment of the seat to accommodate the length of the user's legs and on the Luxury (EHPL) model, provides up to 5° independent forward tilt.

WATERFALL FRONT / SEAT PRESSURE REDUCTION (Luxury & Elite)

The rounded front seat is designed to reduce pressure points on the underside of user's thighs. In addition, foam panels surround both front and sides of the seat for greater pressure distribution.

16 ERGOHUMAN CLASSIC & PROJECT SEATING INNOVATION FEATURES

For a full technical specification, please see page 24-26.

OPTIONAL HEADREST

The headrest can be tilted and height-adjusted to suit the user's individual requirements.

BACK HEIGHT

Raise or lower the chair's back to support the user's back and lumbar region.

LUMBAR SUPPORT



The Ergohuman boasts a patented lumbar system which, unlike traditional chairs, delivers comprehensive lumbar coverage and unrivalled support in every recline position. This promotes a more natural pelvic alignment and helps reduce musculoskeletal complications.

A pre-tensioned metal connector provides automatic resistance to the user's lower back which varies with seating positions.

SEAT HEIGHT

Raise or lower the chair's seat height to fit the individual user's anthropometric measurements.

SINGLE LEVER CONTROL MECHANISM



Ingeniously simple single lever control to operate the seat height, and back tilt functions.

TENSION CONTROL

Adjusts back tension to allow the back to tilt comfortably supporting the user's body weight when reclining.

MULTI-FUNCTIONAL MECHANISM (Classic)

Multi-functional single lever control allows back to recline to a 2:1 back-to-seat ratio for personalised comfort and support.

POLISHED BASE

Polished aluminium five-star base with 65 mm PU castors.

AUTOMATIC TENSION WEIGHT BALANCE MECHANISM

When recline, the mechanism can adjust automatically the back-tilt tension according to each user's body weight to provide suitable tension. Each user does not need to adjust the tension by manual.

SEAT SLIDE

This feature allows depth adjustment of the seat to accommodate the length of the user's legs.

ARMRESTS

Height (6 position lock), angle and depth adjustable to allow forearms to rest comfortably. These arms are removable without affecting the design of chair.

ENHANCED WATERFALL FRONT / SEAT PRESSURE REDUCTION

The rounded front seat is designed to reduce pressure points on the underside of user's thighs. In addition, foam panels surround both front and sides of the seat for greater pressure distribution.



PROJECT



ARMRESTS

Height (10 point), depth and angle adjustable to allow forearms to rest comfortably. These arms are removable without affecting the design of chair.

SEAT SLIDE

This feature allows depth adjustment of the seat to accommodate the length of the user's legs.

WATERFALL FRONT / SEAT PRESSURE REDUCTION

The rounded front seat is designed to reduce pressure points on the underside of user's thighs. In addition, foam panels surround both front and sides of the seat for greater pressure distribution.

CLASSIC

18 **ERGOHUMAN** **MODELS** **& OPTIONS**

The Ergohuman is designed for both aesthetic impact and ergonomic excellence. An extensive selection of soft and durable mesh, leather and fabric upholstery offers a variety of colour combinations to suit any environment. This stylish chair delivers outstanding ergonomic comfort and innovation – the perfect example of form and function in complete harmony.

For complementary visitor seating, see Comfort's Lii visitor chair.

MODELS



LUXURY

ELITE

CLASSIC

PROJECT

INTERCHANGEABLE BASE OPTIONS



POLISHED



NYLON

UPHOLSTERY OPTIONS



MESH
HEADREST,
BACK & SEAT



LEATHER
HEADREST,
BACK & SEAT



FABRIC
HEADREST,
BACK & SEAT



MESH
HEADREST & BACK,
LEATHER SEAT



MESH
HEADREST & BACK,
FABRIC SEAT



MESH
BACK & SEAT



LEATHER
BACK & SEAT



FABRIC
BACK & SEAT



MESH BACK &
LEATHER SEAT



MESH BACK &
FABRIC SEAT

Other combinations are available.

Build and download your own design using our chair configurator at
www.comfort.global/create

ADDITIONAL OPTIONS



COAT-HANGER / BLACK GLIDES



NOTEBOOK STAND* / LEGREST* / POLISHED GLIDES

*NOTEBOOK NOT AVAILABLE ON CLASSIC & PROJECT MODEL
LEGREST NOT AVAILABLE ON CLASSIC MODEL

20 ERGOHUMAN UPHOLSTERY

Comfort are passionate about using mesh on our chairs due to their durability and ergonomic properties. In addition, we have selected a range of complementary leathers and fabrics to mix-and-match. Should you wish to upholster in an alternative material, we work with all the leading contract fabric suppliers and can advise of suitability – non stock items will increase lead times.

KMD MESH



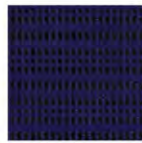
WHITE
KMD36



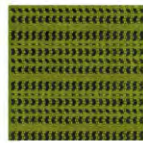
GREY
KMD30



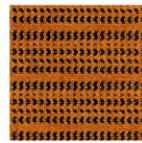
BLACK
KMD31



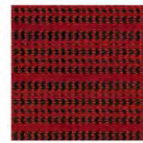
BLUE
KMD35



GREEN
KMD34



ORANGE
KMD33



RED
KMD32

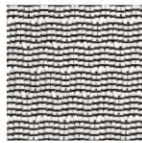


BURGUNDY
KMD37

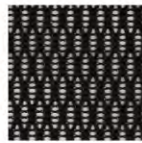
W MESH



GREY
W09-53



WHITE
W09-24



BLACK
W09-01



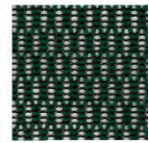
RED
W09-10



ORANGE
W09-51



BLUE
W09-18



GREEN
W09-19

ZB MESH



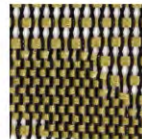
WHITE
ZB7



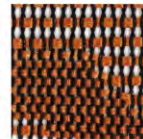
TANGERINE
ZB4



HERBAL GREEN
ZB3



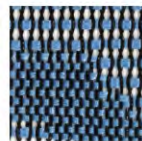
BRONZE
ZB8



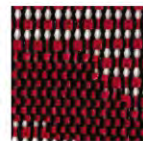
BRIGHT ORANGE
ZB9



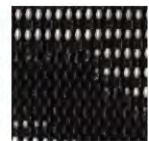
SILVER
ZB1



SKY BLUE
ZB5



RED
ZB6



BLACK
ZB2

LEATHER



SAFRAN
LE3902



SNOW
LEA2



HUNTER GREEN
LE197



SKY BLUE
LE196



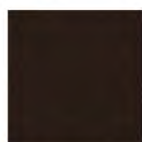
INDIGO
LE1118



DARK BLUE
LE70091



LATTE
LE7810



DARK BROWN
LE8213



RED
LE3310

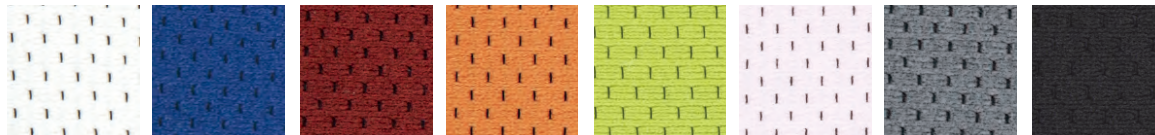


RED ORANGE
LEH007



BLACK
LE2095

FA (FABRIC)



BEIGE
A24301

BLUE
A24326

RED
A24305

ORANGE
A24335

GREEN
A24314

PINK
A24375

GREY
A24307

BLACK
A24337

CAMIRA XTREME (FABRIC)



ORCHILLA
YS167

CAMPECHE
YS074

LOMBOK
YS159

TONGA
YS160

FLORES
YS161

APPLE
YS096

MADURA
YS156

TABOO
YS045



APPLEDORE
YS077

WINDJAMMER
YS047

MONTSERRAT
YS011

ARECIBO
YS174

MARIANNA
YS157

PARASOL
YS073

ARAWAK
YS016

HAVANA
YS009



NAVASSA
YS162

LEEWARD
YS164

BLUEFIELD
YS021

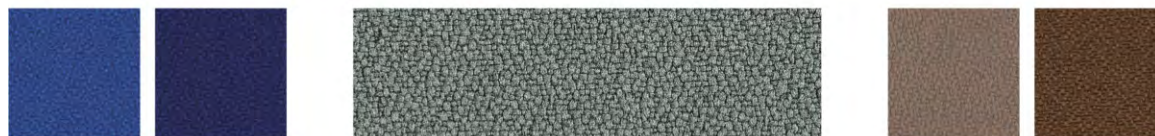
OCEAN
YS100

SCUBA
YS082

CAYMAN
YS024

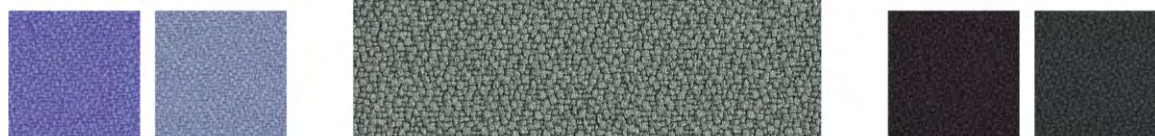
COSTA
YS026

MARTINIQUE
YS004



HONEYMOON
YS035

CURACAO
YS005



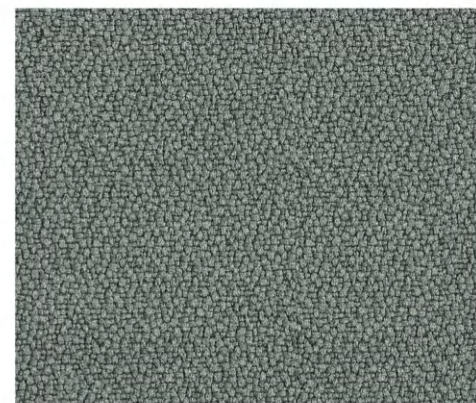
BLUEBELL
YS097

ANGUILLA
YS169



SLIP
YS094

OSUMI
YS171



XTREME IS A CREPE WEAVE FABRIC
MADE FROM 100% RECYCLED MATERIAL.
(BLIZZARD - YS081 SHOWN)

PLEASE CONTACT CAMIRA FOR SWATCH OR SAMPLES.



BONAIRE
YS172

KRABI
YS141

BLIZZARD
YS081

RHUM
YS173

PADANG
YS145

TWISTER
YS083

BRIDGETOWN
YS102

MAUVE
YS069



TAROT
YS084

ANDAMAN
YS144

TOBAGO
YS030

CALYPSO
YS106

TOKARA
YS136

PANAMA
YS079

BELIZE
YS105

DIABLO
YS101





24 ERGOHUMAN TECHSPEC

	LUXURY	ELITE	CLASSIC	PROJECT
GREEN CREDENTIALS GREENGUARD CERTIFICATION GREENGUARD Certification standards have established performance-based standards to define products and processes with low chemical and particle emissions for use indoors. RECYCLABILITY MATERIAL ANALYSIS PLASTIC ALUMINUM ALLOY STEEL UPHOLSTERY PU/FOAM RECYCLED MATERIAL TOTAL	GOLD	GOLD	GOLD	GOLD
	98%	98%	97%	95%
	CONTECT RECYCLE	CONTECT RECYCLE	CONTECT RECYCLE	CONTECT RECYCLE
	31.3% 90%	38.3% 90%	42% 90%	45.1% 90%
	60.1% 10%	53.1% 10%	35% 10%	20.2% 10%
	5% 80%	5% 80%	19% 80%	29.6% 80%
	0.9% -	0.9% -	1% -	1.6% -
	2.7% -	2.7% -	3% -	3.5% -
	38%	38%	57%	57%
CERTIFICATION EN 1335 -1:2000 -2:2009 -3:2009 Office furniture. Office work chair. Safety requirements. EN 5459-2:2008 Specification for performance requirements and tests for office furniture Office pedestal seating for use by persons weighing up to 150kg and for use up to 24 hours a day, including type-approval tests for individual components.	YES	YES	YES	YES
	YES	YES	YES	YES
	YES	YES	YES	YES
	YES	YES	YES	-

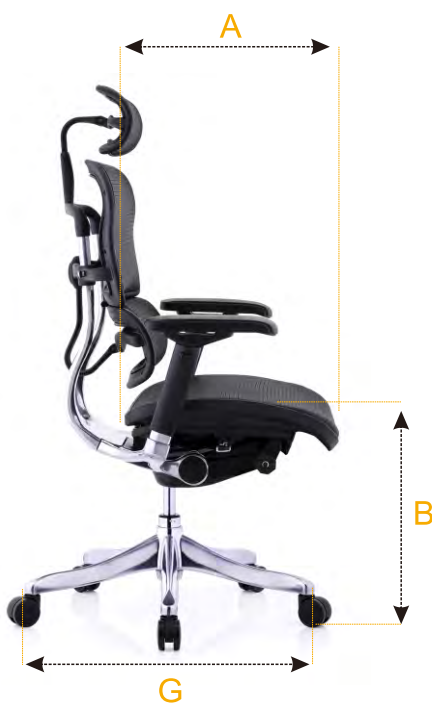
25 ERGOHUMAN DIMENSIONS

ERGOHUMAN PLUS LUXURY



	mm
A	440 - 490
B	400 - 500
C	450 - 485
D	560 - 630
E	500
F	175 - 220
G	650

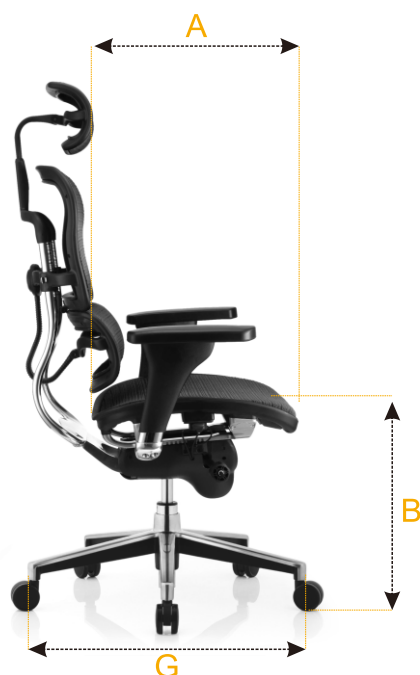
ERGOHUMAN ELITE



	mm
A	440 - 490
B	400 - 500
C	450 - 485
D	560 - 630
E	500
F	175 - 220
G	650

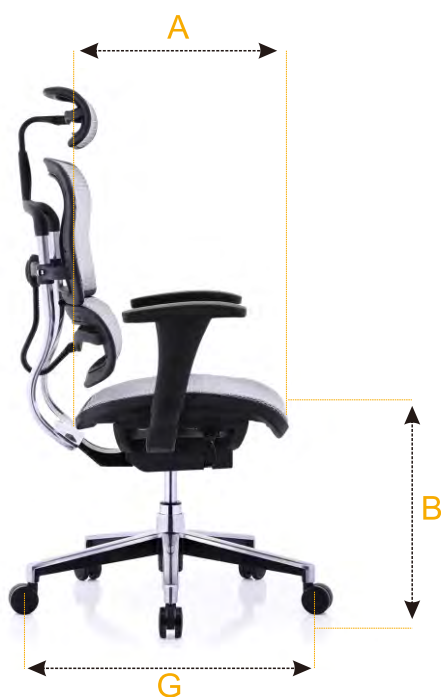
26 ERGOHUMAN DIMENSIONS

ERGOHUMAN CLASSIC



	mm
A	440 - 490
B	390 - 480
C	480
D	570 - 630
E	520
F	175 - 220
G	645

ERGOHUMAN PROJECT



	mm
A	400 - 450
B	470 - 560
C	480
D	570 - 630
E	500
F	175 - 220
G	640

COMFORT WORKSPACE



DELIVERING ERGONOMIC SEATING SOLUTIONS

As Asian most dynamic manufacturer, Comfort Workspace focus on high end ergonomic chairs in the past over 20 years. Comfort continues to go from strength to strength in the competitive commercial seating and office furniture market

We create better working environments by providing the ultimate in comfort and posture control with our range of ergonomic chairs – a revolution in office comfort



INTELLIGENT & TECHNOLOGICAL MANUFACTURING

Intelligent & Technological Manufacturing bring great revolutions for global office chairs factories

The Following certifications from left to right are

- 1.Green Building Evaluation Certificate
- 2.Certification for Materials Recyclable Percentage
- 3.International Certificate for Supplier Ethical & Social Commitment
- 4.European Union Furniture Institute Certification for Dimensions and Safety
- 5.American National Furniture Institute Certification for Safety, Strength and Durability
- 6.International Authoritative Certificate for Indoor Air Quality
7. European Union Certificate for Restriction and Evaluation of High Concern Chemicals



